



Number 150

“the ship comes first”

Sept 2015

The Newsletter of the Barque *Polly Woodside* Volunteers Association Inc.

PWVA Committee:

Chairman: Neil Thomas, thomclan1@bigpond.com 9802 4608

Vice-Chairman: Capt. Ralph McDonell, ralphmcd@bigpond.com.au, 9807 5646

Hon.Secretary: Jenny Hunter. 9690 3669, jmdhunter39@gmail.com

Hon Treasurer and Wave Editor: John Wroe, jacwroe@bigpond.net.au, 9531 5626

Other Committee Members: Don Knowles, 9877 1584; Neville Keown, 9877 9234; Roger Wilson.

DISCLAIMER: Please be aware that statements, opinions & comments made by contributors to this journal are not necessarily those of the PWVA Committee and/or its Members.

Chairman's Chat

On November 7th 1885 *Polly Woodside* was launched from Slip No.2 at Workman Clark and Co. Ltd. Belfast. This year is *Polly Woodside's* 130th birthday. A party is to be announced!

Things are starting to speed up at Polly. However there are only 4 Polly volunteers getting down to the ship on the Tuesdays. Our regular members being, Don Knowles, Roger Wilson, Simon with Ash his Carer, me. and Trevor Dove or Michelle Jeffries from BMT.

Peter Allen is looking after his wife, who is very ill, and our thoughts are with them.

Richard Barber is undergoing surgery for a shoulder problem, and we also wish him all the very best and hope to see him back at Polly in the near future.

John Maxwell, unfortunately has had to leave our ranks, and we wish him the very best for the future. We miss you already John.

You may recall we had submitted a 'Volunteer Recruitment Letter' to Hayley Jenkins – Nat Trust's Manager for People and Culture in June – well, we now have seven more attendees on Tuesdays. Scott, Paul and Jerzy are now regulars, with Denise, Katrina, Wenjuan and Nerius attending whenever possible

As you know we had to bring the Mizzen Spanker Gaff down, thanks to Sarah and Seumas, and it has been lying on the quarter-deck for some time. We thought initially to fish a new section on the

mast end, but having found there were too many shakes in the remainder, so it has been decided to have a new one manufactured. The PWVA will pay for the manufacture of a laminated timber post and the cost of having it turned, while the National Trust have agreed to cover the GST and pay for the transport of the beam from Bayswater to Tooradin and then to Polly Woodside. This has started with the manufacture of the beam now completed, to be transported to Tooradin for turning on Tuesday 1st September by George Vodden, one of our volunteers – thanks George from all of us – then the completed Gaff is estimated to arrive at Polly on the 15th September, again thanks to George Vodden, then with aid and direction of a rigger the spanker gaff will be sent up and rigged. This will be our birthday present to Polly Woodside.

The initial replacement tools have been purchased by Nat Trust thanks to Steve Richardson, our Manager. These consisted of a cordless drill, batteries and a charger, a power saw and an orbital sander.

Timber upper works are being cleaned and oiled, with painting commenced on the upper works – see Don's report.

We are still hoping to see Polly in all her finery in November, with a promise there will be a party to celebrate.

To end, unfortunately on a sad note, Harold Lovig passed away on the 17th July 2015. One of early volunteers, he was invited to join the Polly Woodside Volunteers Association in 1975. Our thoughts and prayers go out to his family.

Neil



At about 10am on Tuesday 29th September George Vodden with his mate John arrived at Polly after their truck was escorted from Clarendon Street by Don Knowles and myself with our new Spanker Gaff on board. For once our timing was good because we had volunteers from ANZ with us, hence making light work of removing it from the truck and onto the trestles in the workshop.

As the workshop is 10 metres wide and the gaff is 8.5 metres long we neatly divide the workshop in two – could be interesting if any functions are booked.

Don Knowles has started the long job of fitting the gooseneck and other fittings to the gaff, and it is really going to be a labour of love.

When finished and painted, it will be sent aloft and the Mizzen will no longer look bare – thanks mainly to Don and George.

Neil



Ship Report

Things are on the move at Polly:

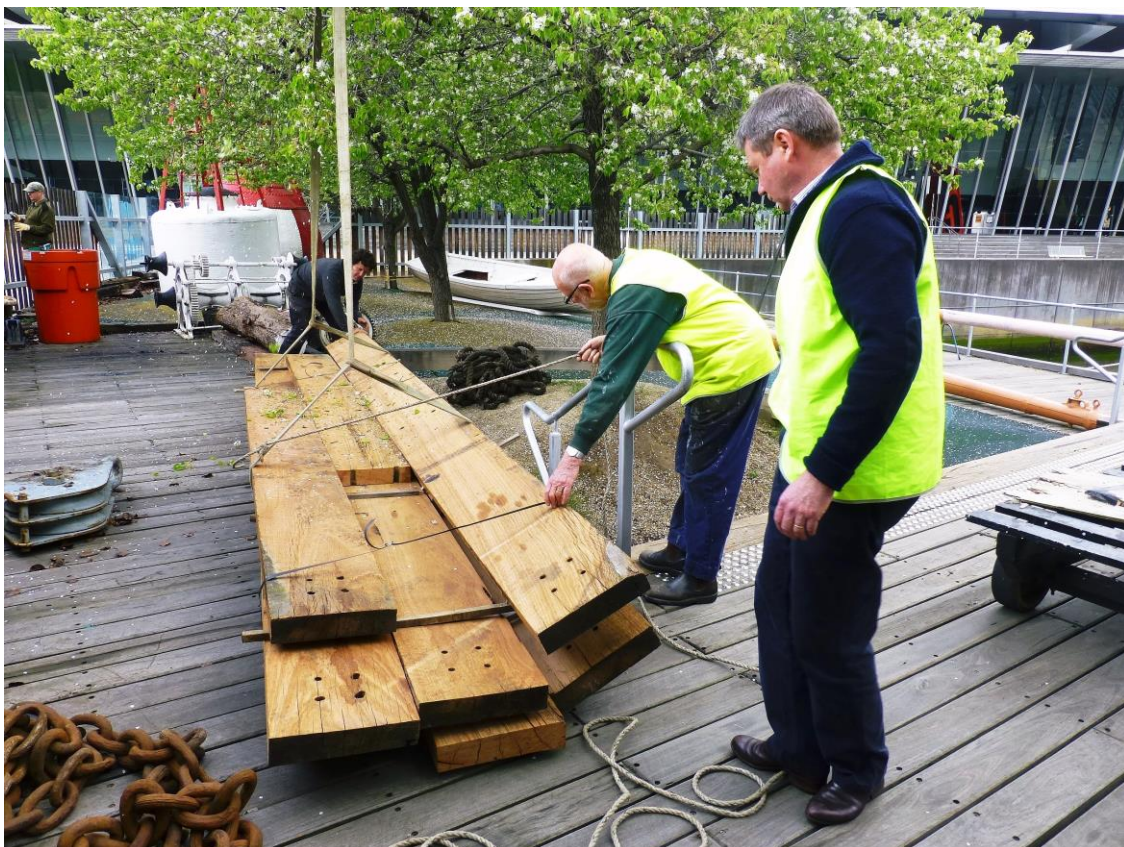
The Margin Boards: As you will recall a number of margin boards had to be removed due to rot, located on the port side of deckhouse, the scupper edge of the deck, and along the for'ward edge of the main hatch. Unfortunately our timing was not too good as there has been a considerable delay in finally obtaining their replacements, which arrived at Polly on the 15th of September. These over a century old timbers, being from a removed portion of North Wharf, and are in excellent

condition. Our concern was – how do we get them into the site due to their length and weight? Saved! There was a crane on the truck, and as you can see from the photos Ferdie guided them over the fence and down to the decking in one lift. Next comes the work of cutting them to size and fitting them into situ.

ANZ Bank Volunteers; Seven eager bank volunteers descended on us on the same day as the margin boards (we never do things by halves), and they oiled the entire inside of the site fences. Not a bad days work, and they had enough energy left at the end of the day to show off (see photo). Many thanks, you can definitely see where they have been.

Spanker Gaff; We no sooner got the mizzen topmast up when we found we had to remove the gaff due to rot in the timber at the 'gooseneck' fitting (mast end). At first we were going to fish in another timber section to replace the rotten piece, so we acquired a replacement piece of timber, but then shakes were found in the rest of the gaff. To find another piece of timber the size we needed was not going to be easy, so we decided to have a laminated beam manufactured in Bayswater (Don Knowles organised it), then truck it to Tooradin to be turned by a wood-turner to shape and size, and then to be transported to Polly. The transport was organised and provided by George Vodden, one of our volunteers, whom we owe grateful thanks for his efforts, as the only expense for this was \$200 for fuel. The PWVA paid for the manufacture and turning of the gaff, while the National Trust covered the GST for the project and paid for the transport.

Neil



The “new” margin boards

Vale Harold Lovig

Ahoy there me harties !

My dad Harold Lovig, one of the original volunteers on Polly's restoration, passed away last Friday (17th July).

Dad spent many years at the Polly with his wife Thelma in the 70s, and then many years looking out over the water from his home in Mt Martha.

He has been in Mayflower Aged Care in Brighton for the last 4.5 years, and peacefully passed away.

Alas, we are not burying him at sea!

Virginia Lovig

Daughter

Tel: 0402 484 225

Vale Dorothy Minkoff

I just wanted to pass on the sad news that my mother, Dorothy, passed away peacefully in late June. She'd been quite well until the last few weeks but we had plenty of time to talk about her photos, her early years as a teacher, and her pre-children time with dad. I've been checking her email for her, and saw a copy of the Wave, so thought I'd write and let you know.

Kate Minkoff

0433621376

foskeyfamily@optusnet.com.au

37 Alphington St

Alphington 3078

My apologies for the lateness and somewhat disjointed edition of the Wave which are due to health issues of your editor.

May I also take this opportunity of thanking our Chairman Neil (and of course the ships' volunteers) for his untiring efforts to bring the Polly up to scratch for her 130th birthday.

John Wroe - Editor

