



WAVE



Number 138

“the ship comes first”

Jun 2012

The Newsletter of the Barque *Polly Woodside* Volunteers Association Inc.

PWVA Committee:

Chairman: Neil Thomas, thomclan1@bigpond.com 9802 4608

Vice-Chairman: Capt. Ralph McDonell, ralphmcd@bigpond.com.au, 9807 5646

Hon.Secretary: Jenny Hunter. 9690 3669, jmdhunter39@yahoo.com.au

Hon Treasurer and Wave Editor: John Wroe, jacwroe@bigpond.net.au, 9531 5626

Other Committee Members: Don Knowles, 9877 1584; Neville Keown, 9877 9234; Roger Wilson, Barrie Wood

DISCLAIMER: Please be aware that statements, opinions & comments made by contributors to this journal are not necessarily those of the PWVA Committee and/or its Members.

CHAIRMAN’S MESSAGE

Greetings fellow volunteers,

There are multi - changes at Polly Woodside and the site - this is what happens when our Treasurer goes overseas (we are only jealous). Welcome home John!

Management -

First there was Marcia, who went on Maternity Leave, and could be back in September/October. Then we had Melissa, who co-ordinated everything so well between staff and volunteers. She got everything moving smoothly, and then unfortunately she also has now moved on to richer pastures.

The National Trust has now appointed a Temporary Manager to the ‘Polly Woodside’. Sean De Coury, who is the Manager of ‘The Old Melbourne Gaol’, will be with us until such time as our manager situation is resolved. At present he comes to the site on Tuesdays, and is starting to smarten the place up. Security has been tightened, and he is endeavouring to resolve matters between the staff and volunteers, and also to create an on-going policy for all on the site.

Visitor numbers being down, the site is closed now on Mondays and Tuesdays during the winter and this gives us a day to work on the ship with fewer interruptions.

Workshop -

You will recall the plans for the revamped workshop that were on show at the AGM - well it is now finished. The volunteers were given a holiday for about 8 weeks, while the builders constructed and adapted the workshop.

The workshop has been built in two sections – the workshop itself, and the storage area. They are divided by one of Tor's original sails which is being used as a curtain.

Sarah and Seumas (you will recall are our Bosun / Riggers) have been going flat out, fitting out the workshop, building new cupboards, new workbenches, and preparing the safety bases for the new machines. Seumas has spent weeks with the architect ensuring the space is as fully utilised as possible. The end result is we now have a larger and much more flexible work area.

With a new Paint locker and Timber Storage Unit built outside, we have even more space available inside. It has been warmly received by the volunteers.

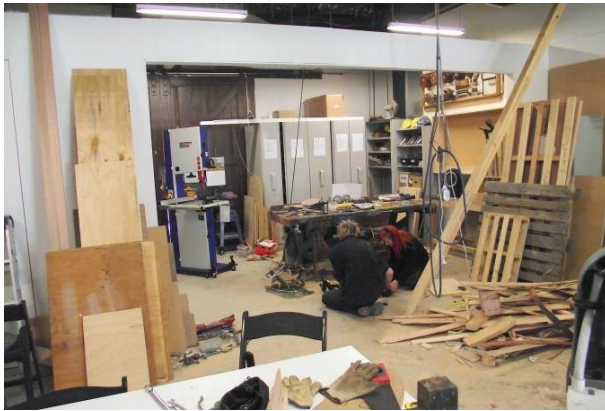


Photo 01 - Workshop under construction from dock side door with Sarah & Seumas building one of the machine bases.

Photo 02 - Workshop from dock side door (after construction).

Photo 03 - Workshop to dock side door - note display cases

Tools -

Remember our beloved table (fished out of the Yarra) that was in the mess-room? Well, unfortunately it was much too large to remain in the workshop, so it had to go. We inquired around the volunteers to see if anyone was interested in acquiring it, and Roger Wilson came forward but unfortunately it was too big for their home. Getting desperate we widened the field, and Sarah found a friend who plans to lovingly restore it. He offered \$50 for it, which we accepted.

The National Trust then offered to replace the large and small band saws, as well as the bench drill with new, modern, more compact units, which are safety approved, easier to use and more accurate machines. As a result we now have a brand new band saw, a new pedestal drill, as well as a thicknesser, with possibly a

wood lathe to follow. Although it was sad to see them go, Sarah and Seumas did a great work creating a detailed description with photos, of each of the old machines. This resulted in us receiving higher prices than normal for them on EBay.

The large band saw, sold for \$500, the small band saw for \$292, and the bench drill for \$182. The EBay fees for the sales came to \$85, so we have an extra \$888.50 from the tools, plus \$50 for the table, giving us a grand total of \$939 towards one of our Polly Woodside's future restoration projects.



Photo 05 – New Bandsaw, Photo 06 – New Pedestal Drill, Photo 07 – New Thicknesser.

Barnstorming Meeting:

Highlights of our meeting with Temporary Manager, Sean De Coury:-

Review maintenance program. Log details for each maintenance activity

Get support from government agencies- specifically fund raising.

Re-establish goodwill with previous sponsors e.g. Wattle Paints.

Cooperation **both ways** between staff and volunteers.

2 metre height restriction problem to be resolved.

Copies of Occupational Health & Safety Rules to be acquired.

Where are we going?

Attempt to foster better cooperation between us and Plenary / Exhibition Corporation.

Need to document all ideas.

Anybody out there got any more ideas??

Spar Ceiling a.k.a Sparring Battens

Term	Definition
spar ceiling	removable strips of timbers or <u>battens</u> fixed to the <u>frames</u> in the cargo <u>hold</u> to keep cargo away from the ship's sides; this promotes ventilation and prevents cargo damage by condensation and chafing

We have now commenced our next project, which is the installation of the Spar Ceiling (see above), on the upper section of the hold, (to complete what has been started at the fore and aft ends on both port and starboard sides), 5 planks along each side of the ship, and then we hope to mount our Volunteers' Memorial Plaques on them in a random pattern at a future date.

We have purchased and have had the timber (294 metres) and fixing bolts delivered. This has been stored in the hold after much maneouvering (Don, Rod,



Photo 08 - Don Knowles planing edges of spar ceiling planking. Photo 09 - How it will look completed.

Peter, Barrie and yours truly). All edges of the planks have been planed twice, and after due deliberation it worked out we had walked a total of 2.3km. (Don, John, and me).

Painting of the timber has commenced (Heinze). We will be starting the work on the spar ceiling once the school holidays are over.

Pump-house:

You may recall that the Pump house has been flooded a number of times in the past? Major Projects are planning to rectify this problem soon by draining the dry-dock and sealing the pump inlets.

During this time, as the ship is to remain in the dock, we hope to be examining and doing work on the hull.

Neil Thomas

BOSUN'S REPORT MAY 2012

Since the last Wave went to press, we have largely been occupied with the redesign of the workshop. As you know, the decision was made to make the space multi-functional, so that it could double as an events facility after hours, and thus generate a bit more income for the ship. This presented something of a challenge, as we were obviously very invested in keeping our workshop as a workshop, and not losing any more space, but Polly is a lady of expensive tastes and the income generated from functions is necessary for her upkeep.

The designs were refined over several weeks, in consultation with the architect, until we had something we were happy with from a maintenance point of view, and which also provided a welcoming and usable event space. Rather than sacrifice half the workshop, Seumas suggested placing the large machinery on lockable, wheeled mobile bases which allow it to be moved to occupy the entire space when in use, then easily stored away for functions. The bases Seumas found are rated to the weight of the machines (and their working load), and meet workplace safety standards.

We also have new machines - sadly some of the machinery so generously donated by the PWVA no longer met new workplace safety requirements, so the old Carba-Tec drill press has been replaced by a floor-mounted version, and the giant bandsaw and its smaller friend have been replaced by a medium-sized saw that has roughly the same working capacity as the large one, but occupies a similar footprint to the smaller one.

We also have a new thickness planer (which has already seen good service planing down the large grey gum posts for the new workbenches, and which will be invaluable once we start making new blocks from the oak we sourced a few months ago), and a 5 micron dust extractor, which will make the workshop a far more pleasant place to be when woodworking is being done. We would like to

thank Neil Thomas for his invaluable help, feedback and support during the refurbishment and the machinery replacement.

New cupboards, solid hardwood benches, and shelving are also part of the new design, as well as a dedicated Maintenance Office, so that we have somewhere to work on the administrative side of Polly's maintenance schedule, update the blog (which has been put on hold while the workshop is completed), and deal with the ever-increasing amount of paperwork generated by modern OH&S laws - not to mention somewhere safe and central to keep Polly's ongoing maintenance records and information.

The large photo of Tor is safe, and was the first thing to go up on the newly-completed wall - he will continue to watch - and hopefully approve of - our work. Also on the subject of Tor, the sail that he made which is currently installed on the 'tweendecks 'play' yard, will be re-purposed to form the curtain separating the two halves of the workshop. It will be properly bent on to a 'spar' above the doorway, and rigged so it can be clewed up out of the way during working hours. We hope that it will last longer this way, and a new, lighter sail will be made for the 'tweendecks yard so young visitors can still learn how to furl and gasket a sail.

More new additions include two large lockers (with beautiful vintage-style locks) outside, to store paint and wood. This has freed up a lot of space inside, as the big timber trolley took up a lot of floor. The new storage is dry and convenient to use, and the builders did a nice job of making it an attractive part of the dock display.

The workshop has occupied most of our time over the last few weeks, but on Polly herself work continues on her bilge pumps to get them in good working order again, and we are still waiting on the wood for the margin boards. We also anticipate that her pin-rails will need to be replaced soon, as their many years of good service out in the weather have taken their toll, and rot has well and truly set in. We are also waiting to hear whether the ship will be dry-docked in the coming months when the pump-house is drained (to assess and fix the persistent leak which has been causing it to flood), and how this will affect her maintenance plans. In the meantime, we are very much looking forward to getting the workshop finished and functional, getting back to work on Polly, and welcoming the volunteers back (which as I write this will be in a week from now). See you soon!

ADDENDUM: Since we wrote this, in what seems like a very short time, a lot has happened at Polly. We were both very sad to say goodbye to Melissa, who has now left Polly. We enjoyed both her leadership and her company, and wish her all the best for the future. Sean De Courcy from the Gaol is now Polly's manager; his energy and experience have already been absolutely marvelous, and we look forward to Polly's future with Sean at the helm.

We have received word that Polly will soon - very soon, in fact - be dry-docked, as the dock needs to be drained to allow the persistent flooding problems at the Pump-house to be fixed. The good news is that this is being organised by the State Government, and it will hopefully be an opportunity to re-assess the condition of her hull, and get her cleaned and painted. At time of writing we are still waiting on

details of when this will happen and what will happen on site, but we are very excited about seeing Polly out of the water, and finding out more about the condition of her hull.

In other maintenance news, Polly's Mizzen Gaff will be brought down very soon, as it has suffered some damage from rot, and will need to be replaced. This will mean that the attached fittings and rigging will also be assessed and refurbished. Together with the Fore T'gallant Yard, this will keep us all busy while we finish the Rigging Report.

Sarah & Seumas

LESS THAN HALF OF THE PWVA MEMBERS HAVE PAID THE \$20 MEMBERSHIP FEE FOR THIS YEAR (IF YOU ARE NOT SURE WHETHER YOU HAVE PAID - YOU PROBABLY HAVEN'T!). IF YOU END UP PAYING TWICE DON'T WORRY, IT WILL COVER NEXT YEAR'S FEES.

PLEASE SEND YOUR CHEQUE MADE PAYABLE TO "PWVA" TO JOHN WROE, 38 ADDISON STREET, ELWOOD, VIC 3184.